



SUV HIGHWAY TERRAIN

90% Road & Sand, 10% Dirt & Mud

With a modern tread design featuring the latest generation technology, you get exceptional performance in wet conditions and enhanced stability at higher speeds.



CIRCUMFERENTIAL GROOVES

4-deep water channels to efficiently evacuate water, giving you ultimate traction and exceptional cornering ability especially in wet conditions.



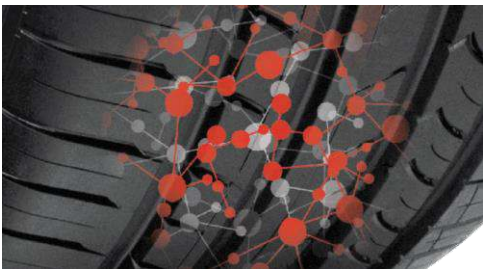
CONTINUOUS OUTERRIBS

Work with the varied block sizes for optimised noise reduction, enhancing your driving experience on varied highway surfaces.



R-TECH AND COMFORT ASSIST ENGINEERING

Computer designed sidewalls with an extended bead filler and a vibration absorption layer, comfort assist, to distribute road impact more evenly to reduce discomfort, giving you a safer, softer and smoother ride.



HIGH SILICA COMPOUND

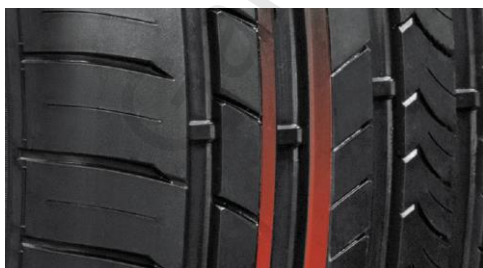
Utilises a chemically-coupled silica compound to give you enhanced wet traction and treadwear.

[HIGH SILICA COMPOUND video](#)



DIAMOND SHAPED TREAD BLOCKS

Multiple tread block edges deliver enhanced wet road grip.



SOLID CENTRE RIB

Stability channel for centre feel and directional stability to deliver a relaxed driving experience especially at highway speeds.