

# SRX



Asset Registered Design No. 80254023

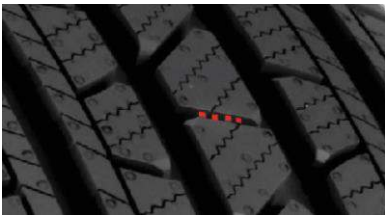
## SUV PREMIUM TOURING

90% Road & Sand, 10% Dirt & Mud

With advanced technology and engineering, the SRX delivers long life tread, maximum ride comfort and improved efficiency, available in a wide range of fitments.



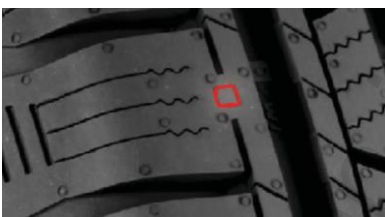
## Features



## STABLEEDGE™ TECHNOLOGY

Keeps the grooves between the tread open, giving you enhanced stability, traction, handling and a better feel for the road.

### [STABLEEDGE™ TECHNOLOGY Video](#)



## WEAR SQUARE™ VISUAL INDICATORS

Change as your tyres wear, making it easy to determine the tread life remaining. This gives you confidence and safety you can see.

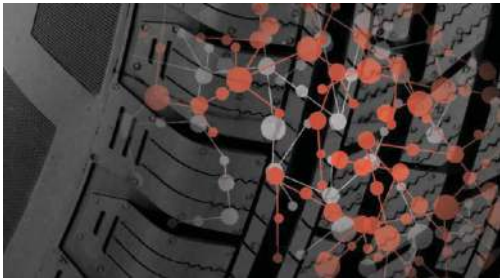
### [WEAR SQUARE™ VISUAL INDICATORS Video](#)



## R-TECH ENGINEERING

Computer designed sidewalls with an extended bead filler and performance compounding. Variable density nylon\* reinforcing overlaying the steel belts offsets any stiffness created by the extended bead filler. R-Tech gives you a safer, softer and smoother ride. \*Selected sizes only.

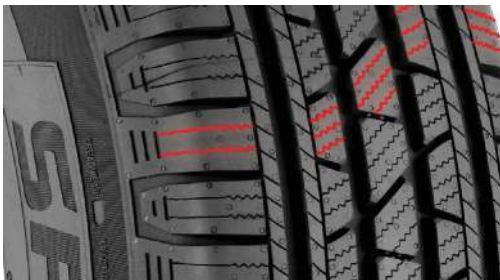
### [R-TECH ENGINEERING Video](#)



## ADVANCED SILICA COMPOUND

Formulated with the optimum content of chemically coupled silica provides excellent extra wet traction and highway handling, while lowering rolling resistance. This gives you more grip and fuel efficiency.

### [ADVANCED SILICA COMPOUND Video](#)



## 3D MICRO GAUGE™ SIPING

Allows the tread blocks to interlock, giving you maximum stability for increased traction, handling and safety, even at half worn.

### [3D MICRO GAUGE™ SIPING Video](#)

## [THE COOPER SRX PUT TO THE TEST video](#)