

S/T MAXX



Aut. Registered Design No. 134205

HEAVY DUTY ALL-TERRAIN

50% Road & Sand, 50% Dirt & Mud

Developed after three years of testing in Australia's outback to give you the toughest all-terrain performance.



Features



ENHANCED BUTTRESS DESIGN

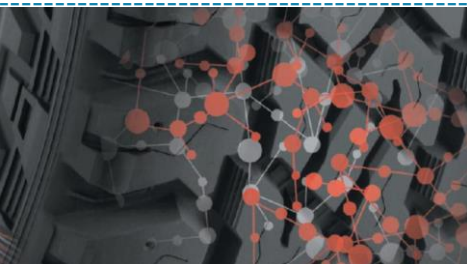
Provides additional off-road traction and a rugged appearance, giving you abrasion resistance and sidewall protection.



STONE EJECTOR RIBS

Stone ejector ribs and varied channels resist damage and avoid drilling, giving you resistance to cutting and chipping.

[Anti Stone Retention Video](#)



SILICA AND NATURAL RUBBER COMPOUND

The S/T maxx features a uniquely formulated compound of silica mixed with natural rubber to give you reduced cut and chip in off-road conditions and improved wet traction.

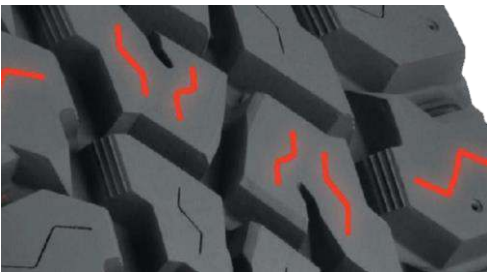
[Silica and Rubber Compound video](#)



ARMOR-TEK3 CONSTRUCTION

On top of high tensile construction, the S/Tmaxx features Armor-Tek3 - an additional 3rd ply on an 8° angle. Unique Armor-Tek3 construction is engineered to give you over 2.5 times more tear and impact damage resistance by reducing the rubber gaps by 50% to give you peace of mind when driving off-road. *Compared to standard 2-ply tyres.

[ARMOR-TEK3 CONSTRUCTION video](#)



3D MICRO GAUGE™ SIPING

Allows the tread blocks to interlock, giving you maximum stability for increased traction, handling and safety, even at half worn.

[3D MICRO GAUGE™ SIPING video](#)



Y-BLOCK TREADPATTERN

Y-Block Tread Pattern and optimised draft angles maximise on and off-road grip, giving you remarkably low noise for a tyre of its class.