

EVOLUTION M/T

EXTREMEMUD

20% Road & Sand, 80% Dirt & Mud

The Evolution M/T is the ideal mud terrain for the weekend four wheel driver. It's sidewall is 20% stronger than most similar tyres from competing brands, thanks to Cooper's specially designed high tensile body ply. The Evolution M/T provides extra grip and improved traction on mud and dirt because of features like **Mud Slingers** and **Earth Diggers**.

Features

Tap on the feature below you would like to know more about.

- Extra Grip Earth diggers forcefully dig into loose dirt,...
- Tough Sidewall Protection 'V' shaped sidewall "climbers"...
- Improved Traction Mud slingers are deep, wide voids bet...
- Damage Resistance Cooper's specially designed high stre...
- Puncture Resistance Stone barriers are raised ridges wh...
- Cut and Chip Resistance Cooper's specially formulated ru...





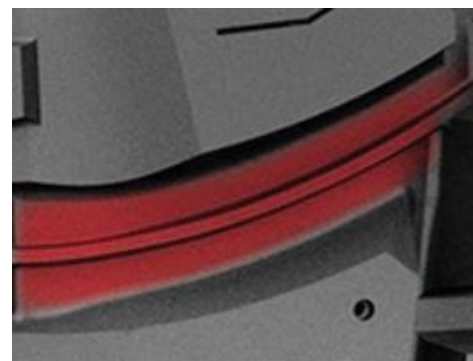
EXTRA GRIP

Earth diggers forcefully dig into loose dirt, sand and sticky mud. Giving you extra traction in tough situations.



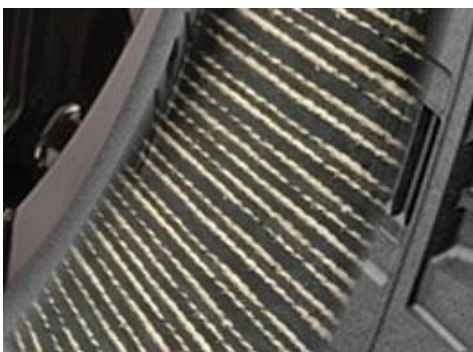
TOUGH SIDEWALL PROTECTION

'V' shaped sidewall "climbers" help grip to rocks and wood. Giving you sidewall protection and extra grip when scaling rocks and rugged terrain.



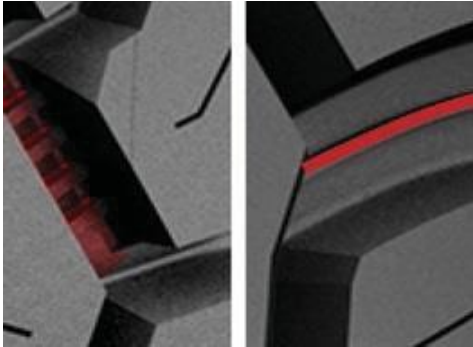
IMPROVED TRACTION

Mud slingers are deep, wide voids between tread blocks allowing continuous cleaning away of stones and thick mud. Giving you improved traction off-road.



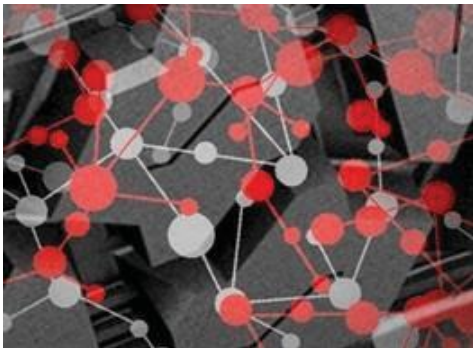
DAMAGE RESISTANCE

Cooper's specially designed high strength, high tensile body ply is 20% stronger than most other brands. Giving you enhanced resistance to rock cuts and impact damage when driving off-road.



PUNCTURE RESISTANCE

Stone barriers are raised ridges which expel lodged stones, reducing any chance of stone drilling into the tyre carcass. Giving you puncture resistance and peace of mind when driving off-road.



CUT AND CHIP RESISTANCE

Cooper's specially formulated rubber compound withstands cuts and chips from tough dirt and gravel roads. Giving you extended tread life and protection from cutting and chipping.