

CS5 ULTRA TOURING



ULTRA TOURING

90% Road & Sand, 10% Dirt & Mud

Features the most advanced tyre technology with an emphasis on performance to give you the performance edge.

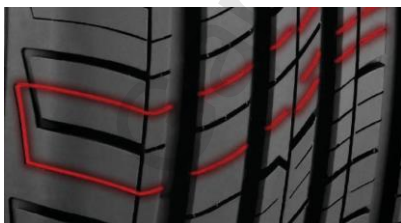
Features



WEAR SQUARE™ VISUAL INDICATORS

Change as your tyres wear, making it easy to determine the tread life remaining, giving you confidence and safety, you can see.

[WEAR SQUARE™ VISUAL INDICATORS video](#)



3D MICRO GAUGE™ SIPING

Allows the tread blocks to interlock, giving you maximum stability for increased traction, handling and safety, even at half worn.

[3D MICRO GAUGE™ SIPING video](#)



R-TECH ENGINEERING

Computer designed sidewalls with an extended bead filler and performance compounding. Variable density nylon* reinforcing overlaying the steel belts offsets any stiffness created by the extended bead filler. R-Tech gives you a safer, softer and smoother ride. *Selected sizes only.

[R-TECH ENGINEERING video](#)



ADVANCED SILICA COMPOUND

Formulated with the optimum content of chemically-coupled silica provides excellent extra wet traction and highway handling, while lowering rolling resistance. This gives you more grip and fuel efficiency.

[ADVANCED SILICA COMPOUND video](#)



STABLEEDGE™ TECHNOLOGY

Keeps the grooves between the tread open, giving you enhanced stability, traction, handling and a better feel for the road.

[STABLEEDGE™ TECHNOLOGY video](#)

[DRIVE SAFER, FOR LONGER ON THE CS5 video](#)