

# CS5 GRAND TOURING

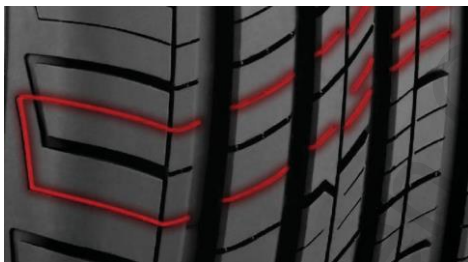


## GRAND TOURING

90% Road & Sand, 10% Dirt & Mud

Features the latest leading-edge advancements in tyre technology to deliver an even wearing, long lasting, yet quiet tyre, designed to fit most popular SUVs and Cars.

## Features



## 3D MICRO GAUGE™ SIPING

Allows the tread blocks to interlock, giving you maximum stability for increased traction, handling and safety, even at half worn.

[3D MICRO GAUGE™ SIPING video](#)



## WEAR SQUARE™ VISUAL INDICATORS

Change as your tyres wear, making it easy to determine the tread life remaining, giving you confidence and safety you can see.

[WEAR SQUARE™ VISUAL INDICATORS video](#)



## R-TECH ENGINEERING

Computer designed sidewalls with an extended bead filler and performance compounding. Variable density nylon\* reinforcing overlaying the steel belts offsets any stiffness created by the extended bead filler. R-Tech gives you a safer, softer and smoother ride. \*Selected sizes only.

[R-TECH ENGINEERING video](#)



## ADVANCED SILICA COMPOUND

Formulated with the optimum content of chemically-coupled silica provides excellent extra wet traction and highway handling, while lowering rolling resistance. This gives you more grip and fuel efficiency.

[ADVANCED SILICA COMPOUND video](#)

[DRIVE SAFER, FOR LONGER ON THE CS5 video](#)

[THE COOPER CS5 PUT TO THE TEST video](#)

[CREEK TO COAST TALKS COOPER CS5 video](#)