

ATT

ALL-WEATHER



90% Road & Sand, 10% Dirt & Mud

The new generation all-terrain AT34S™ with SUV light duty construction delivers a softer & quieter ride, for outstanding on-road grip and handling. Great for week commutes and weekend getaways and guaranteed to last 70,000KM* for real value for money.



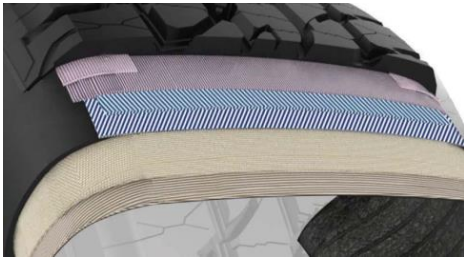
WHISPER GROOVES™

Provides a sound barrier that inhibits tyre noise for a quieter ride.



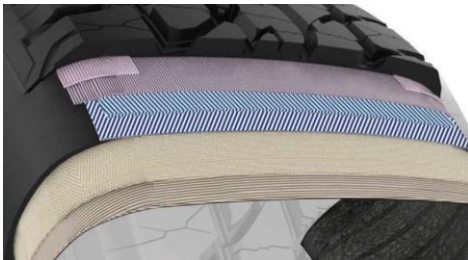
RAISED CURB-BAR DESIGN

Enhances damage resistance.



HIGH TENSILE AND HIGH DENSITY STEEL BELTS

Packaged is 37% stronger than standard SUV tyres.



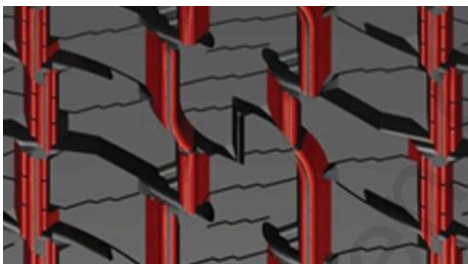
HIGH TENSILE LIGHT TRUCK BODY PLY

Enhances damage resistance and increases load carrying capacity. 49% stronger than standard SUV tyres.



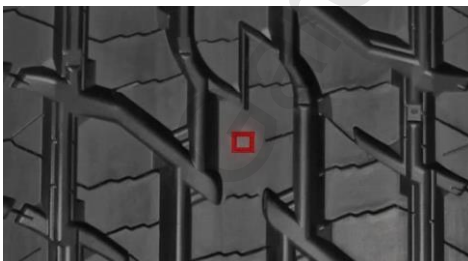
AQUA VAC™ CHANNELS

Improves the tyre's resistance to hydroplaning.



STONE EJECTOR LEDGES AND ENGINEERED GROOVE SHAPES

Easily eject stones and gravel, protecting from stone drilling and maintaining a clean tread for enhanced rough road traction. [Anti Stone Retention Video](#)



CENTRE WEAR SQUARE™

Helps easily monitor your tyre tread wear for longer tyre life.

[WEAR SQUARE™ VISUAL INDICATORS video](#)



HIGH SILICA CONTENT COMPOUND

Provides excellent cut and chip performance and best-in-class tread wear and traction.

[ADVANCED SILICA COMPOUND video](#)

Garden City Tyre & Mechanical