

# AT34S



## ALL-WEATHER

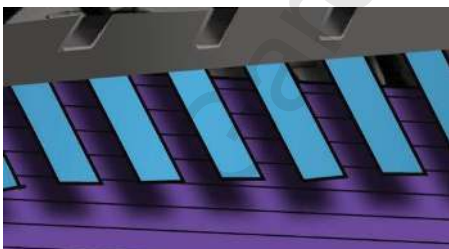
90% Road & Sand, 10% Dirt & Mud

The new generation all-terrain AT34S™ with SUV light duty construction delivers a softer & quieter ride, for outstanding on-road grip and handling. Great for week commutes and weekend getaways and guaranteed to last 70,000KM\* for real value for money.



## SCALLOPED SHOULDERS

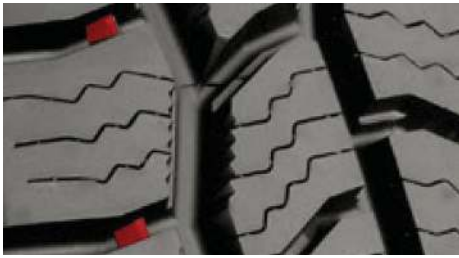
Deliver increased soft surface off-road traction usually reserved for a more aggressive tread design. This feature allows additional traction without compromising on road tyre performance and safety.



## R-TECH ENGINEERING

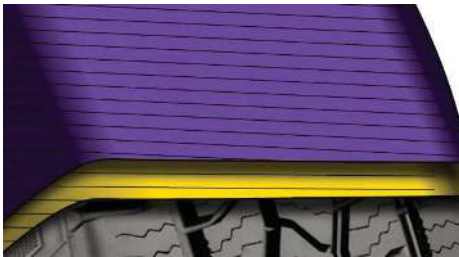
For high ride comfort, combines an extended and stiff bead filler in the sidewall with Variable density nylon overlay over the tread to deliver crisp handling while maintain passenger comfort. R-Tech gives you a safer, softer and smoother ride that you can feel in your hands.

## [R - TECH ENGINEERING Video](#)



## GENTLE WHISPER GROOVE™ SHIELDS

Contain tread pattern noise within the tread area to deliver even lower tread pattern noise (20% less) for increased in-cabin comfort. ("Listen to the music")



## HIGH TENSILE LIGHT TRUCK BODY PLY

Giving Light Truck sidewall strength (unique to Cooper) protect your tyre from sidewall abrasion and increases resistance to sidewall damage.



## AQUA-VAC TREAD TECHNOLOGY

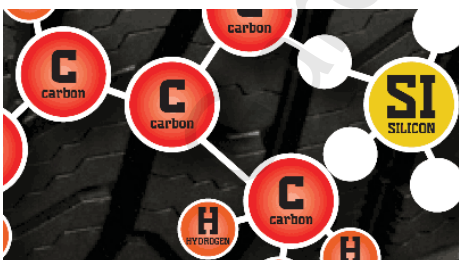
Provides maximum water and soft surface drainage from the tread pattern to maintain crisp and constant feel through the steering wheel in wet weather.



## MAXIMISED FULL-DEPTH MICRO GAUGE SIPING

With more biting edges allows the tread blocks to interlock, giving you increased grip, handling and safety for the entire life of the tyre.

[MAXIMISED FULL - DEPTH MICRO GAUGE SIPING Video](#)



## NEXT GEN SILICA COMPOUND

With Adaptive Technology™ (unique to Cooper) provides extreme weather traction while delivering lower rolling resistance and improved mileage. The silica content in the AT34S™ is optimised to deliver more grip, improved safety, extended tread life.